

# HAZ•ED

Solving Your OH&S Puzzle

## CAPABILITY STATEMENT

CONSULTANCY  
SAFETY TRAINING  
ROOF SAFETY  
ROPE ACCESS  
EQUIPMENT SERVICING  
EQUIPMENT SALES



# CONTENTS

Introduction and company overview ..... 3

Core competencies and achievements ..... 4

Six areas of service ..... 6

Products/Services .....7

Locations ..... 14

Clients by industry /Sector ..... 16

Personal Qualifications ..... 20

# INTRODUCTION AND COMPANY OVERVIEW

Haz-Ed Services is an Australian owned business offering specialist services and solutions to people working in high - risk and hazardous environments covering; Consultancy, Safety Training, Roof Safety, Rope Access, Equipment Sales, and Equipment Servicing for industry, allowing personnel to work safely in their areas of employment.

We maintain consistency throughout our services, ensuring customer satisfaction.

Our people have experience ranging from construction, mining, industrial safety practitioners, defence personnel through to emergency service personnel. The combination of these skills and experiences gives us the edge when it comes to giving you value for your safety dollar.

During initial consultation between either individual and/or company, the benefits of our tailored solutions and competitive pricing over the generic services being offered already in industry, are seen to better fit the client requirements.





## CORE COMPETENCIES AND ACHIEVEMENTS

As a Registered Training Organisation (RTO), Haz-Ed Services is obligated to ensure its ongoing compliance with the Standards for Registered Training Organisations (RTO's) 2015.

Some critical areas for ongoing compliance with these Standards are as follows;

- Ensuring our training and assessment is responsive to industry and learner needs;
- Ensuring our business is quality assured;
- Ensuring our business has effective governance and administrative processes in place;
- Ensuring our business continually improves its services.

Haz-Ed Services takes pride in its service offering, its people and its commitment to customer satisfaction.

Registered Training Organisation  
(RTO) number: 40472



*'Haz-Ed Services takes pride in its service offering, its people and its commitment to customer satisfaction.'*





# 6 AREAS OF SERVICE



## 1

### CONSULTANCY

Our professional and experienced workplace health and safety consultant's link training, sales and consultancy together to provide a rounded service, designed to cater for any organisational context and individual need.

#### SERVICES OFFERED

- Training needs analysis
- Workplace safety requirements
- Workplace procedure requirements and/or generation
- Risk assessment
- Safety audits
- Safety equipment requirements
- PPE requirements
- Equipment servicing requirements
- Roof safety system audits
- Confined space shutdown and/or standby requirements
- Confined space rescue capability





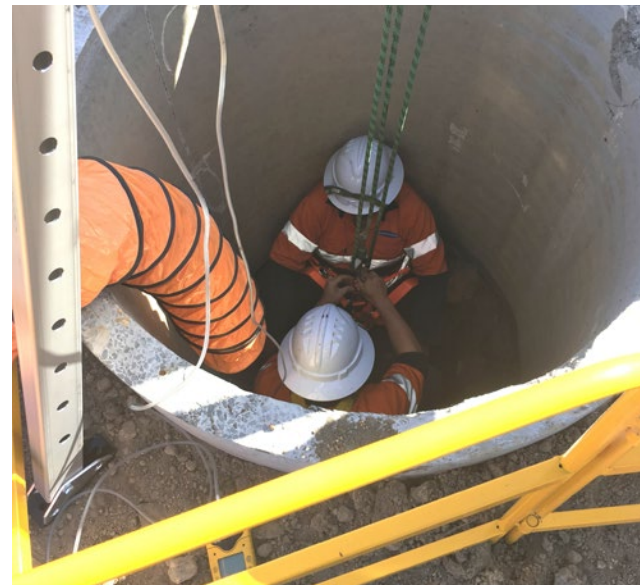
2

SAFETY TRAINING

Haz-Ed Services offer a wide variety of nationally recognised workplace health and safety training courses. These can be delivered as a generic training module or specifically adapted to meet the needs of an employer. In either case, the training delivered is of the highest quality, complies with relevant legislation, guidelines and references relevant standards. We can also come to you.

COURSES OFFERED

- Work safely at heights
- Confined space entry
- Gas detection
- Operate breathing apparatus
- CPR
- Basic life support
- Provide first aid
- Fire extinguisher
- Fire warden
- Chemical spill response
- LV rescue
- Confined space rescue
- Hazardous materials
- Tower rescue
- Undertake vertical rescue
- Conduct fire team operations
- Road crash rescue
- Operate pumps
- Respond to wildfire
- Elevated work platform – high risk, non-high risk
- Perform pole top rescue
- Perform EWP controlled descent escape
- Certificate II in Fire protection, Inspection and Testing
- Certificate III in emergency response and rescue



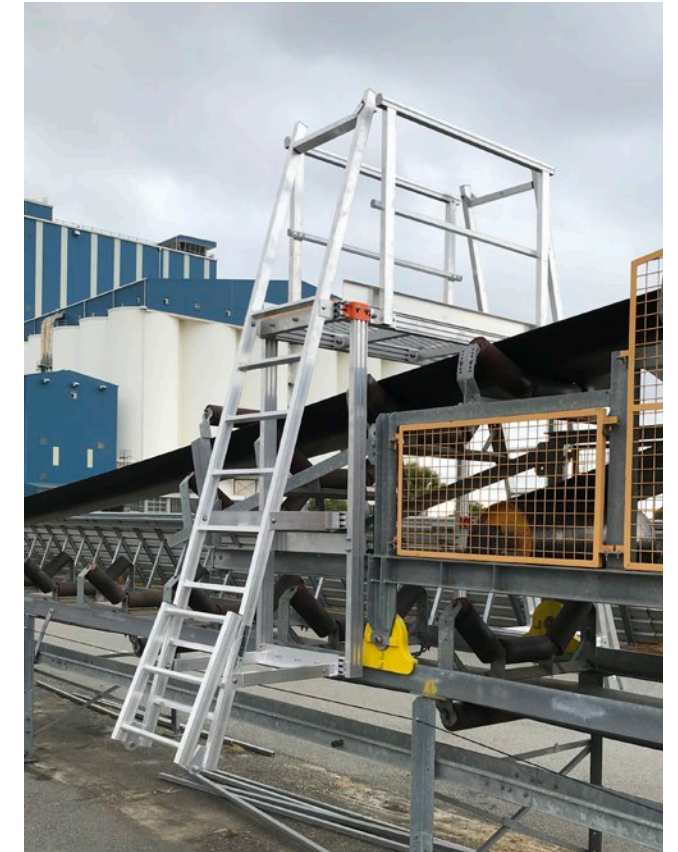
3

ROOF SAFETY

We are committed in industry for the correct design, supply and installation and/or ongoing maintenance of all access and fall prevention/protection systems.

SERVICES OFFERED

- Tailored system design to suit specific requirements and/or budgets
- Comprehensive installation assistance, literature and training available
- Ongoing support and assistance
- Certification and recertification services
- Anchor points, ladders, walkway systems, guard rail, static lines/rigid rail installations
- Roof safety system audits





4

ROPE ACCESS

Haz-Ed is proud to provide a wide range of industrial rope access services. We work closely with our clients to provide innovative options and solutions to access challenges and issues encountered across the project life-cycle. With our proactive approach, clients can make informed decisions about the best way to move forward and how to avoid challenges in the future.

CONSTRUCTION AND MAINTENANCE CAPABILITIES

- Problem and budget resolutions;
- Project management
- Access solutions
- Cladding installations and removal
- Glazing installations and repair
- Sealing and waterproofing
- Sign and billboard installation
- Painting
- Concrete patchwork
- Brickwork Repairs
- Rendering
- Carpentry
- Cabling and ducting installation
- Demolition; removal of materials (i.e ledge/ roof)
- Trades assisting
- Elevated work platform and scaffold erection
- Graffiti removal
- Façade marble / granite sealing and polishing



5

SAFETY EQUIPMENT SALES

In the ever-changing safety environment, there has never been a greater need to keep pace. Haz-Ed Services supply the latest technologies in the fields of safety and emergency response. Partnering with reputable suppliers enhances the ability to provide you with the very best safety equipment combined with excellent after sales service and support.

PRODUCTS

- Head protection
- Ear protection
- Eye protection
- Protective clothing
- Safety harnesses
- Fall arrest lanyards, slings, connection devices
- Vertical/Horizontal lifelines (static lines)
- Heights rescue kits
- Confined space tripods, davits
- Confined space rescue kits
- Gas detection – portable gas monitors
- Respiratory equipment - filter masks/ respirators, breathing apparatus
- First aid equipment - supplies, defibrillators
- Fire protection equipment – fire blankets, extinguishers, hose reels
- Chemical resistant clothing
- LV rescue kits
- Firefighting equipment
- Vehicle extrication equipment





6

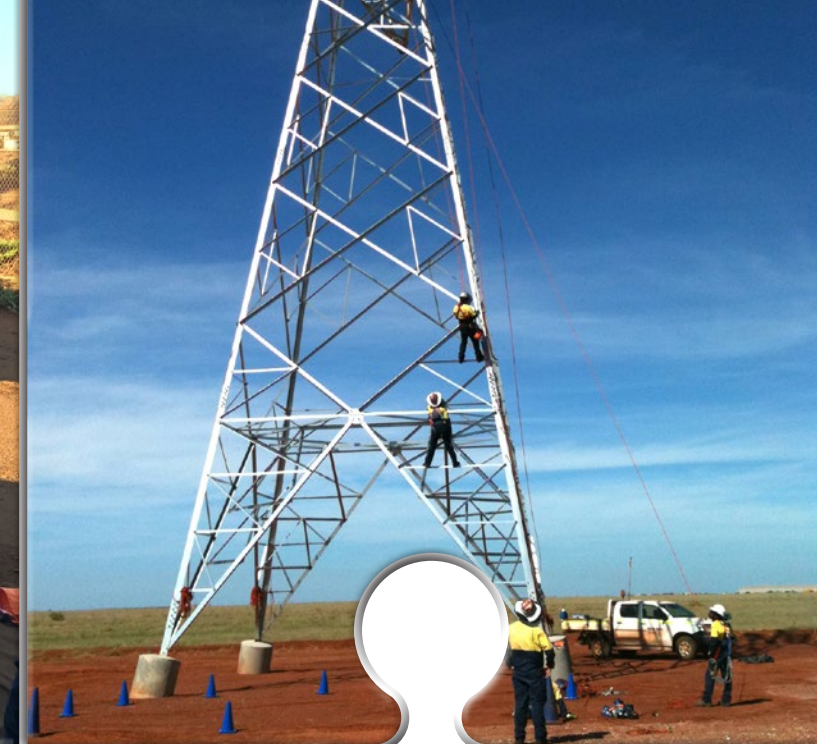
EQUIPMENT SERVICING

Keeping your equipment up to date and in top condition will save you money and lives.

SERVICES OFFERED

- We can provide servicing for all your safety equipment.
- We can check your equipment to ensure its compliant with the appropriate regulations.

*Frequent equipment maintenance ensures a safe work environment as 1 in 6 work place fatalities are caused by faulty equipment.*



**HAZ-ED**  
Solving Your OH&S Puzzle





## LOCATIONS



\*Note, Images not to scale

We proudly service clients across Australia, Christmas Island, and Singapore as well as off-shore.

### Examples of locations we actively service.

- Haz-Ed Services - Malaga
- Perth metro area
- Geraldton
- Port Hedland
- Karratha
- North West Shelf (Oil and Gas projects offshore)
- Bunbury
- Collie
- Albany
- Esperance
- Kalgoorlie
- Karara mine site
- Boddington gold mine
- Christmas creek mine site
- Norseman gold mine
- Premier coal mine site
- Roy Hill mine site
- Brisbane
- Christmas Island
- Singapore





## CLIENTS BY INDUSTRY/SECTOR



### National Broadband Network COMMUNICATIONS

#### Consultancy

- Training needs analysis
- Provide recommendations on high risk work activities
- Work safely at heights procedures
- Confined space procedures
- Safety equipment requirements

#### Safety Training

- Work safely at heights
- Confined space
- Gas detection
- First aid
- EWP

#### Equipment Sales

- Safety equipment – Fall arrest, Confined space



### Australian Defence Force CONSTRUCTION

#### Consultancy

- Roof access and fall protection designs
- Roof access and fall protection equipment requirements

#### Roof Safety

- Installation of roof access and fall protection equipment
- Certification of roof access equipment

#### Equipment Sales

- Roof access and fall protection equipment – Anchor points, Ladders, Walkways, Static lines, Guard rails



### Programmed Facility Management CONSTRUCTION

#### Consultancy

- Roof access and fall protection designs
- Roof access and fall protection equipment requirements

#### Safety Training

- Roof access familiarisation training
- Work safely at heights

#### Equipment Sales

- Roof access and fall protection equipment – Anchor points, ladders, walkways, static lines, guard rails, roof access hatches

#### Roof Safety

- Installation of roof access and fall protection equipment
- Certification/Recertification of roof access equipment



### Downer Group RESOURCES/MINING

#### Consultancy

- Work safely at heights procedures
- Confined space procedures
- Safety equipment requirements

#### Safety Training

- Work safely at heights
- Confined space
- Gas detection
- Fire warden

#### Equipment Sales

- Safety equipment – Fall arrest, Confined space



### Built Construction CONSTRUCTION

#### Consultancy

- Roof access and fall protection designs
- Roof access and fall protection equipment requirements

#### Equipment Sales

- Roof access and fall protection equipment – Anchor points, Ladders, Walkways, Rigid rail systems, Guard rails, Roof access hatches

#### Roof Safety

- Installation of roof access and fall protection equipment
- Certification/Recertification of roof access equipment

#### Rope Access

- Facade maintenance



### WesTrac RESOURCES

#### Consultancy

- Training needs analysis
- Provide recommendations on high risk work activities
- Work safely at heights procedures
- Confined space procedures
- Safety equipment requirements

#### Safety Training

- Work safely at heights
- Confined space
- Gas detection
- First aid
- EWP
- Fire extinguisher

#### Equipment Sales

- Safety equipment – Fall arrest, Confined space



### JLL Real Estate FACILITY MANAGEMENT

#### Consultancy

- Roof access and fall protection designs
- Roof access and fall protection equipment requirements
- Work platform design

#### Equipment Sales

- Roof access and fall protection equipment – Anchor points, Ladders, Walkways, Guard rails

#### Roof Safety

- Installation of roof access and fall protection equipment
- Certification/Recertification of roof access equipment



### Newmont Mining RESOURCES/MINING

#### Consultancy

- Training needs analysis
- Provide recommendations on high risk work activities
- Safety equipment requirements
- Confined space procedures

#### Safety Training

- Work safely at heights
- Confined space
- Gas detection
- First aid
- EWP
- Emergency response training courses



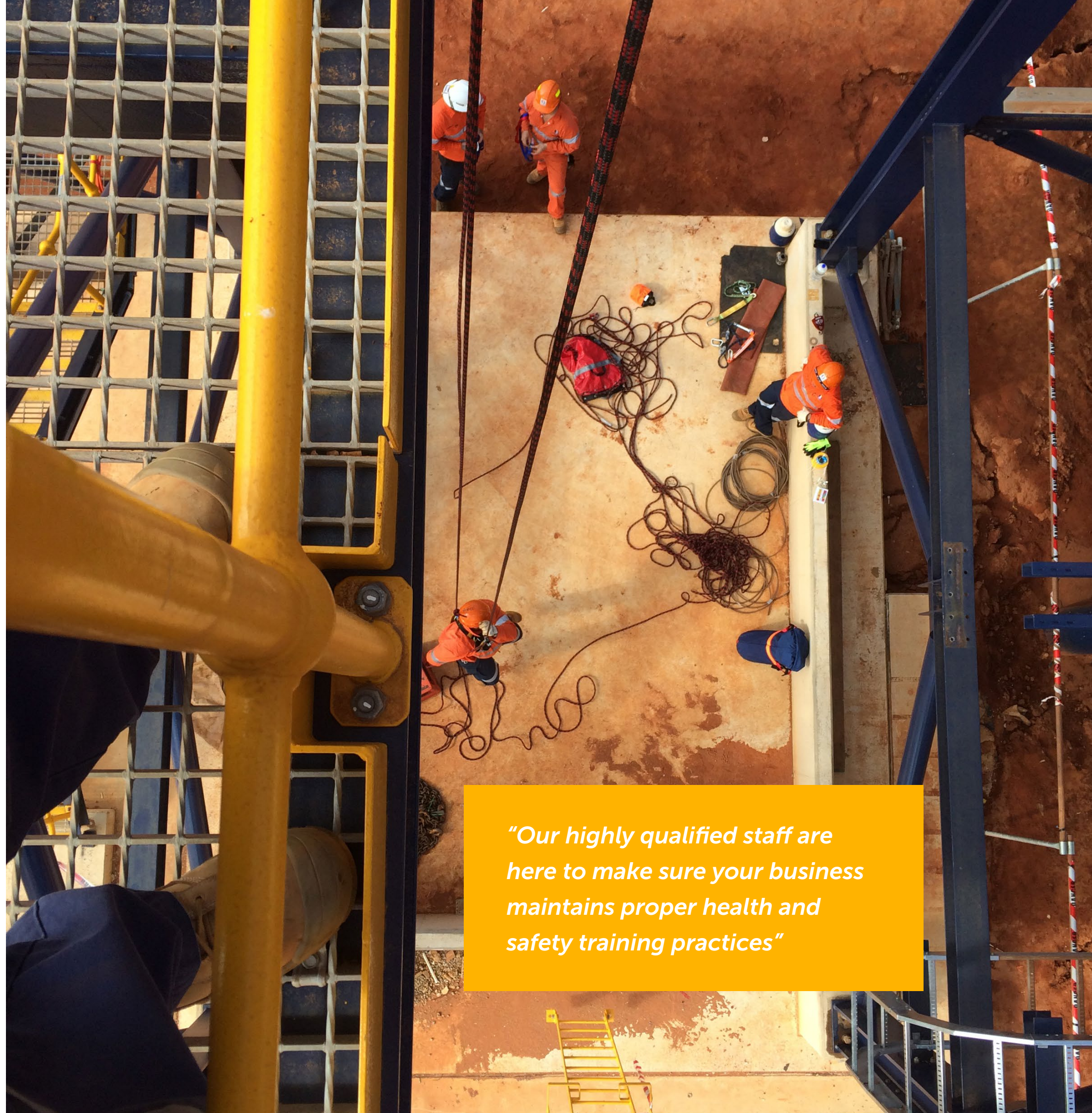




## PERSONNEL QUALIFICATIONS

Our personnel have a vast range of qualifications, including the following;

- Diploma of Management
- Diploma of Occupational health and safety
- Certificate IV in Training and assessment
- Certificate IV in Occupational health and safety
- Certificate II in Medical first response
- Certificate II in Fire protection inspection and testing
- Lead auditor – OH&S management systems
- WorkSafe assessor certification
- Industrial medic
- Work safely at heights
- Provide first aid
- Undertake tower rescue
- Undertake vertical rescue
- Operate as part of an emergency control organisation
- Enter and work in confined spaces
- Confined space rescue
- Provide first aid in an ESI environment
- Perform EWP controlled descent escape
- Operate breathing apparatus
- Undertake first response to fire incidents
- Perform rescue from a live LV panel
- Operate a gantry or overhead crane
- Gas test atmospheres
- License to operate a boom-type elevating work platform (boom length 11 meters or more)
- Undertake road crash rescue
- License to operate a forklift truck
- Work safely in the construction industry (white card)
- Demonstrate first attack firefighting equipment
- Address adult language, literacy and numeracy skills
- Render hazardous materials incidents safe
- Respond to mine incident
- Conduct underground search
- Extricate casualties from underground incident
- Participate in a rescue operation
- IRATA
- Sayfa installation and product training course accreditation level 3
- Checkmate installation training for top fix, inline & overhead static line systems, VR check rail systems, Ferno manufactured permanent & temporary anchor points
- SafetyLink FrogLink installation complete unit



*“Our highly qualified staff are here to make sure your business maintains proper health and safety training practices”*



